



CAMERA ONE QUICKSTART GUIDE

If you need more help, go to www.viaas.com/camera/faq or call (408) 342-5570 or Skype viaas.com

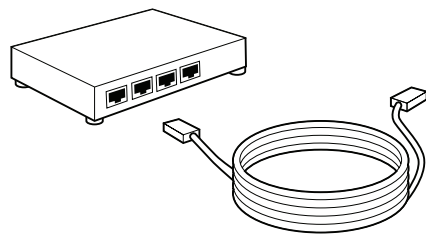
FC VIAAS CAMERA 1

NOTE: This equipment has been tested and found to comply with the limits for a Class B digital device, pursuant to Part 15 of the FCC Rules. These limits are designed to provide reasonable protection against harmful interference in a residential installation. This equipment generates, uses and can radiate radio frequency energy and, if not installed and used in accordance with the instructions, may cause harmful interference to radio communications. However, there is no guarantee that interference will not occur in a particular installation. If this equipment does cause harmful interference to radio or television reception, which can be determined by turning the equipment off and on, the user is encouraged to try to correct the interference by one or more of the following measures:

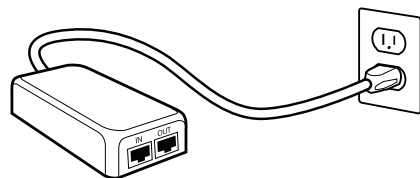
- Reorient or relocate the receiving antenna.
- Increase the separation between the equipment and receiver.
- Connect the equipment into an outlet on a circuit different from that to which the receiver is connected.
- Consult the dealer or an experienced radio/TV technician for help.

1

PREPARATION: THINGS YOU NEED



Connectivity - VIAAS Camera One sends data directly over the Internet. You need at least 350kbps of uplink bandwidth for full functionality. This will support up to 8 cameras with Bandwidth Shaping. You need an available **Ethernet port** and enough **cable** to reach it from your camera location.

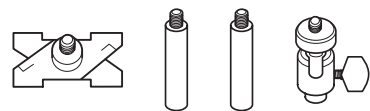


Power Over Ethernet - Power for the camera comes over the Ethernet cable. You need either a **POE Switch** or a **POE Injector**. You can buy these from VIAAS or your local computer equipment provider.

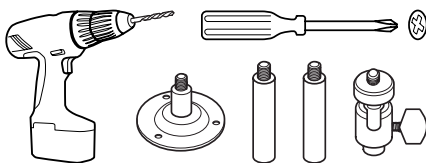
Decide on your mounting and focus point - What do you want to see? We recommend you visit www.viaas.com/camera/framing for advice.

Get your tools and equipment together:

MicroSD Card for Bandwidth Shaping.



Acoustic Ceiling - Scissor base, extenders and mount head.

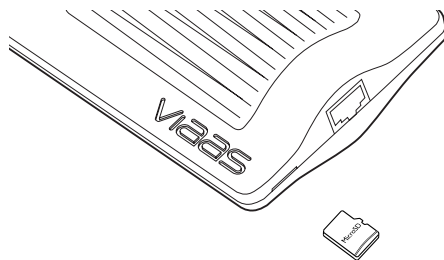


Plaster Ceiling - **1/4" or 6mm drill bit**, **Phillips head screwdriver**, screws and inserts, round base, extenders and mount head.

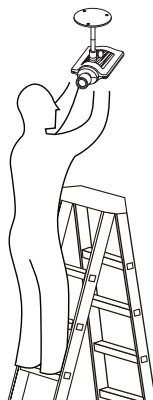
Items in bold are not included in this package.

2

BASIC INSTALLATION

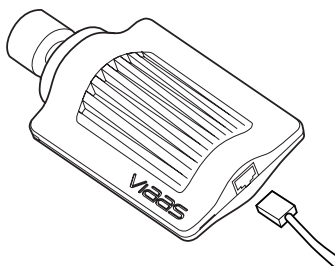


Optional MicroSD Card - If you will be using Bandwidth Shaping, install the MicroSD card printed side up.



Install the camera, it will be configured in place by the service.

For help with mounting, see www.viaas.com/camera/mounting.

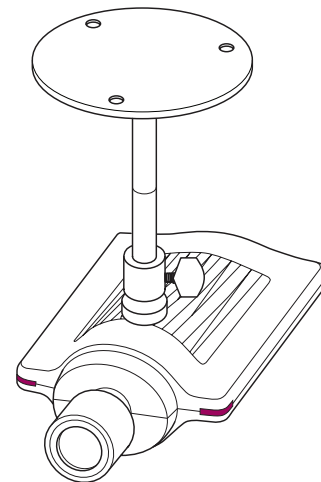


Plug the camera in. The two LEDs on the front should quickly turn on, indicating the camera has power and is starting up. If the LEDs do not immediately turn on, the camera does not have power. Check the POE connections.

You are done with the camera for now but leave the ladder, you will be back to finalize focus and view.

3

CONNECTIVITY & SETUP



After about a minute, the LEDs start alternating slowly indicating the second stage of camera startup.

In another minute, the LEDs both start flashing indicating the camera is connecting to the service.

The camera communicates with the service, upgrading firmware and setting configurations as necessary. The LEDs will blink in different patterns as this process proceeds.

When the camera is fully up and running, the LEDs will both blink on briefly once every two seconds. You can turn them off from the service later if you like.

If after five minutes the LEDs aren't blinking once every two seconds, something is wrong. You need to configure the camera network connection - go to www.viaas.com/camera/connection for help.

4

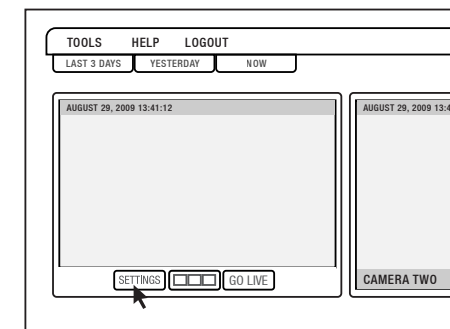
LOGIN TO THE SERVICE



Go to www.viaas.com/service and enter your user name and password.

Look for the camera name that matches the eight character camera identification code which is listed on the back of this manual.

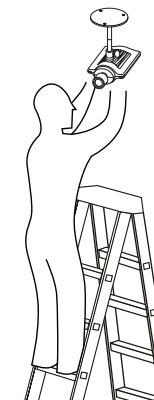
If you don't see your new camera, click "Add a Camera" under the TOOLS menu item in the upper left and enter the identification and activation codes listed on the back of this manual.



Move the mouse pointer over your new camera control and click SETTINGS to finish configuration.

5

FOCUS & VIEW



Click on the FOCUS tab in SETTINGS for the camera. This starts live video and puts the camera in focus mode.

Read the online help for focus, or watch the movie. If you need additional help go to www.viaas.com/camera/focus.

Congratulations, you are now recording video to VIAAS! Go ahead and explore.